



Kent and Medway Primary Care Educators Conference 2026

**KENT AND
MEDWAY
MEDICAL
SCHOOL**



University of
Kent

**Humanising Education: Compassion at the Heart of Learning
For the Multiprofessional Educators in General Practice**
A collaboration between Kent & Medway Primary Care Training Hub
and Kent and Medway Medical School.

**Wednesday 17th June,
8.45am for start 9.15am-4.15pm
Ashford International Hotel**





THE ORGANISERS



The **Kent & Medway Primary Care Training Hub (KMPCTH)** supports the delivery of education, training and Primary Care workforce development through various workstreams, maintaining the locality relationships and networks. It plays a key role in helping Primary Care providers recruit, develop, and retain a skilled workforce.

Alongside NHS Kent & Medway, the KMPCTH supports:

- 46 Primary Care Networks
- 175 general practices
- 2 million+ patients

The KMPCTH team includes both clinical members and business and support members to meet the training and wellbeing needs of the Primary Care workforce in a holistic manner.

Overall, Training Hubs help build workforce capacity and capability, ensuring primary care services have access to a well-trained, sustainable, and adaptable workforce capable of meeting the evolving needs of patients and communities.

Kent and Medway Medical School (KMMS) is an exciting collaboration between Canterbury Christ Church University and the University of Kent and builds on their existing high-quality clinical teaching and research strengths.

KMMS is working in partnership with the highly regarded and well-established Brighton and Sussex Medical School for support and quality assurance purposes.

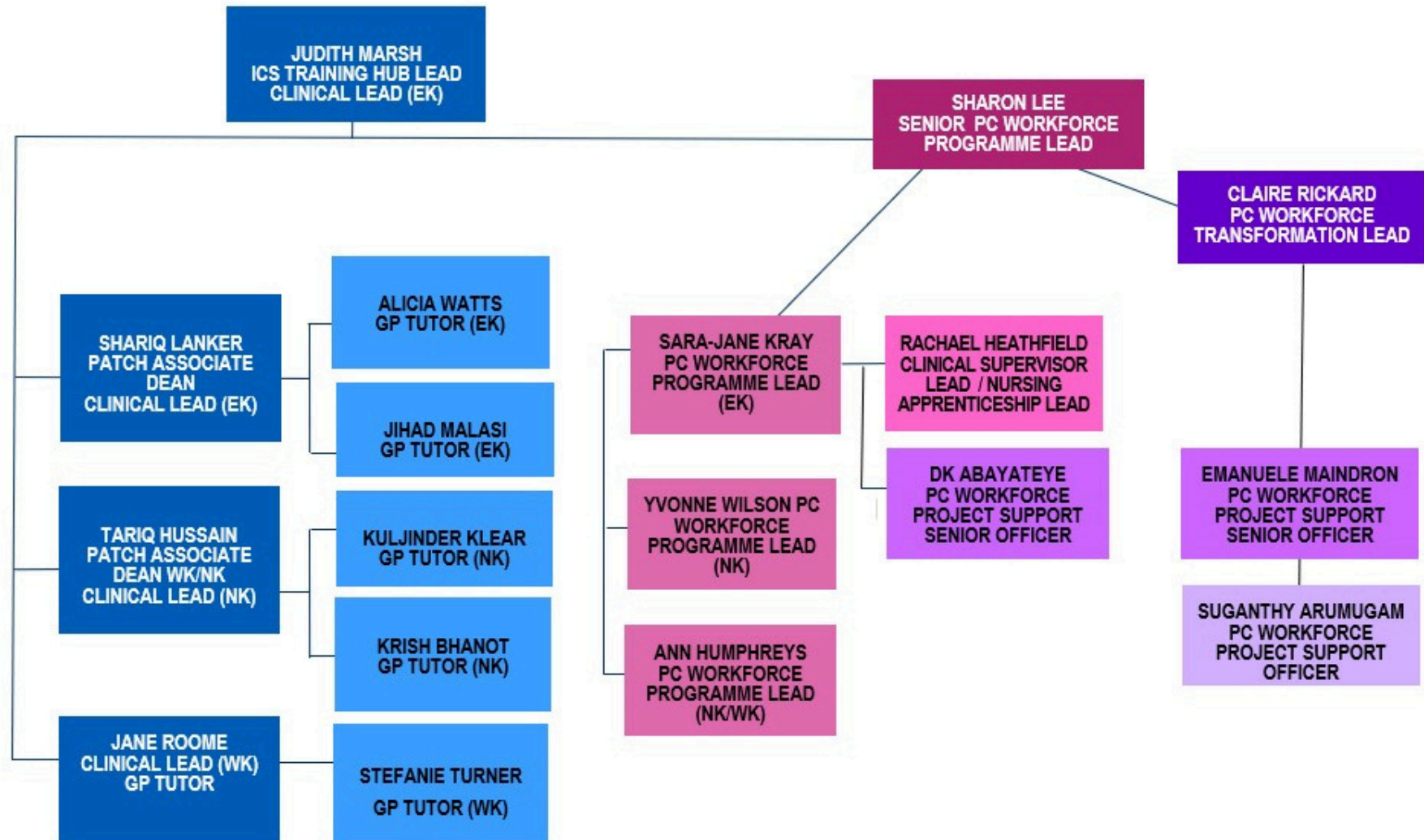
Since September 2020, the school has been educating aspiring doctors to train to deliver 21st century medicine. KMMS wants to attract talented students from all backgrounds, from the local community and beyond and offer opportunities to help to transform the future of healthcare.

The KMMS Bachelor of Medicine, Bachelor of Surgery (BM BS)* is jointly awarded by the University of Kent and Canterbury Christ Church University.



Kent & Medway Primary Care Training Hub

Meet the Team



**KENT AND
MEDWAY
MEDICAL
SCHOOL**



www.kmpctraininghub.nhs.uk/meet-the-team



Kent and Medway Medical School

KENT AND MEDWAY MEDICAL SCHOOL

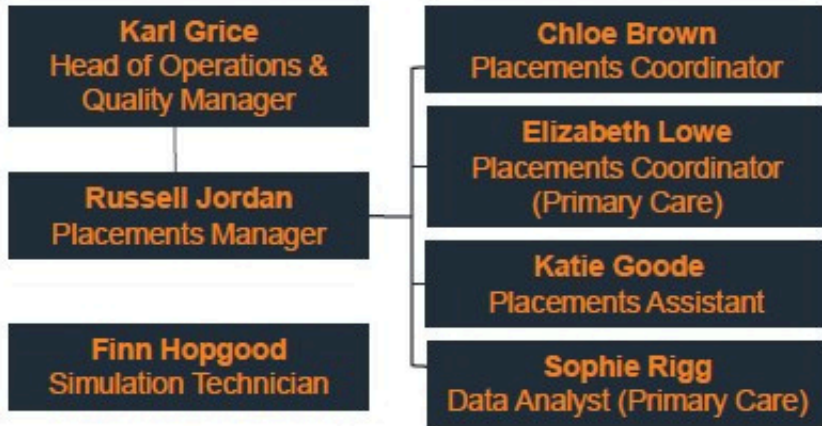


Kent and Medway Medical School

Meet the Team

communityeducation@kmms.ac.uk

Professional Services



GP Team

- | | |
|---|---|
| Dr Adetutu Popoola
Lead for GP and Community Education | Dr Dan Wheeler
Senior Lecturer (TEL) |
| Dr Cath Bruce
Primary Care Faculty Development & Quality Improvement Lead | Dr Hannah Oladokun
Lecturer |
| Dr Alia Faruqi
Senior Lecturer and Module Lead for Year 1 (CPCP1) | Dr James Curtis
Senior Lecturer (TEL) |
| Dr Hannah Bryant
Senior Lecturer and Module Lead for Year 2 (CPCP2) | Dr Samar Ahmed
Lecturer |
| Dr Katie Stone
Senior Lecturer and Module Lead for Year 4 (GPPH) | Dr Jane Roome
Senior Lecturer Simulation Lead |
| Dr Elliot Crampton-Bisset
Senior Lecturer and Year 5 Specialty Lead | Dr Signe Hassan
GP Fellow |
| | Dr Gurdeep Dosanjh
GP Fellow |
| | Dr Abiola Adelowo
Lecturer |



- | | | | | |
|--|--|---|--|---|
| Curriculum Team
curriculum@kmms.ac.uk | Assessment Team
assessment@kmms.ac.uk | Digital Education Team
digitaleducation@kmms.ac.uk | OSCEs
osce@kmms.ac.uk | MMIs
mmi@kmms.ac.uk |
|--|--|---|--|---|





TIME	PROGRAMME TITLE	SPEAKER
8:45am - 9:15am	Registration, Refreshments Networking and Marketplace	
9:15am – 9:30am	Welcome and House Keeping	KMPCTH & KMMS
9:30am – 10:30am	Keynote Speaker 1: Compassionate Teamworking for High-Quality Primary Care	Professor Michael West
10:30am – 11:00am	Refreshments and Networking Break	
11:00am – 12:30pm	Workshop 1	
12:30pm – 1:30pm	Lunch and Networking	
1:30pm – 2:30pm	Keynote Speaker 2: Flourishing Spaces in Challenging Times	Professor Louise Younie
2:30pm – 4pm	Workshop 2 <i>Refreshments served here</i>	
4pm - 4:15pm	Closing Presentation Thank you from us all	KMPCTH & KMMS
4:15pm	CLOSE	

YOUR HOSTS



Judith Marsh



Judith Marsh is a Registered Nurse and Queen's Nurse with 25 years' experience in Primary Care in Kent & Medway. She is a Clinical Lead for Kent & Medway Primary Care Training Hub supporting and growing all multi-professional roles.



Dr. Jane Roome



Dr Jane Roome is a GP in West Kent, Locality Training Hub Lead, and GP Tutor for West Kent, working across the Kent, Surrey and Sussex (KSS) Primary Care School and the Kent and Medway Primary Care Training Hub.



Claire Rickard



As the Primary Care Workforce Transformation Lead, Claire Rickard identifies, co-creates, and leads on a range of workforce improvement projects which bring together partners from across the system.



Dr. Adetutu Popoola



Dr Tutu Popoola is a GP Educator, the Lead for General Practice and Community Education and a Senior Fellow of the Higher Education Academy at KMMS, where she oversees the delivery of the primary care component of the BMBS programme.



Dr. Cath Bruce



Dr Cath Bruce is a GP Partner in West Kent and an active multi-professional primary care educator over many years. She is now working at KMMS as Faculty Development and Quality Improvement Lead for Primary Care placements.





Keynote Speaker : Professor Michael West

Compassionate Teamworking for High-Quality Primary Care



Pr. Michael West

Michael West CBE is Senior Visiting Fellow at The King's Fund, London and Professor of Organisational Psychology at Lancaster University, Visiting Professor at University College, Dublin, and Emeritus Professor at Aston University.

He graduated from the University of Wales in 1973 and was awarded a PhD in 1977 for research on the psychology of meditation. He has authored, edited and co-edited 21 books and has published more than 200 articles in scientific and practitioner publications on teamwork, innovation, compassionate leadership, and culture, particularly in healthcare. He is a Fellow of the British Psychological Society, the American Psychological Association (APA), the Academy of Social Sciences. He is an Honorary Fellow of the Royal College of Physicians and Surgeons of Glasgow and an Honorary Fellow of Royal College of Surgeons of Ireland, Faculty of Nursing and Midwifery. He is a member of the Advisory Council of The Global Compassion Coalition.

His latest books are *Compassionate leadership: Sustaining wisdom, humanity and presence in health and social care* (2021, London: Swirling Leaf Press) and *Simply Being: A Meditation Guide*, (2025, London: Swirling Leaf Press). He supports many health care and other public sector organisations internationally to develop compassionate, high quality care cultures.

He was appointed a CBE in the Queen's Birthday Honours List 2020 for services to compassion and innovation in healthcare.



**KENT AND
MEDWAY
MEDICAL
SCHOOL**





Keynote Speaker : Professor Louise Younie

Flourishing Spaces in Challenging Times



Pr. Louise Younie

Louise Younie is a General Practitioner and Professor of Medical Education at Queen Mary University of London and University of Oxford.

She has extensive experience with co-creative and creative enquiry methodologies in medical education for humanising medicine, professional identity formation and human flourishing.

Louise chairs the Royal College of GPs Creative Health Special Interest Group (SIG), is a National Teaching Fellow (2022) and Principal Fellow of the Higher Education Academy. Her 'Flourishing Spaces' programme received the silver QS Global Education Award in the 'nurturing wellbeing and purpose' category, 2024.

louise.younie@phc.ox.ac.uk



**KENT AND
MEDWAY
MEDICAL
SCHOOL**





WORKSHOPS

1. Leading Effective Dialogues in Challenging Situations

Monika Carlin

2. Compassion in Action – Co-Creation of Supervision Principles for Interprofessional Learners

Dr Cath Bruce - Dr Tutu Popoola - Karen Swift - Pr John Hammond

3. Human Factors in Primary Care - Exploring Human Factors, Systems Thinking and Reflective Discussion

Dr Leone Walker - Dr Caroline Sweeney

4. Getting Involved in Research and Innovation (R&I): A Practical Guide for GP Practices

Dr Edyta McCallum - Dr Mayur Vibhuti

5. Practical Introduction to Quality Improvement Projects

Karleen Huggins



**KENT AND
MEDWAY
MEDICAL
SCHOOL**





USING MEDTRIBE

Medtribe is the [booking platform](#) used by the KMPCTH.

Creating and using your individual **Medtribe** account will allow you to:

- Book your place on events and workshops,
- Access resources
- Mark your attendance
- Receive surveys
- Store certificates

On the day, please make sure to:

1. **Log in to your account**
2. **Mark your attendance**
3. **Confirm you have booked your 2 workshop places**
4. **At the end of the day, make sure you have completed the feedback form to generate your Certificate of Attendance.**



BOOKING YOUR PLACE ON WORKSHOPS

Delegates will need to **book their place on 2 workshops** of their choice **ahead of the conference**.

Places will be allocated on a first come, first served basis. If the workshop you want is full, please choose another one.

There are two 90min sessions for each of the 5 workshops (morning session and afternoon session).

To book your place on each of your 2 chosen workshops:

Please **click on the workshop title** on the right; this will take you to Medtribe:

Choose your session (morning OR afternoon) using the drop-down options and book your place.

Make sure you have booked a **total of 2 different workshops** (one in the morning, one in the afternoon).

1. Leading Effective Dialogues in Challenging Situations
Monika Carlin

BOOK NOW >>

2. Compassion in Action - Co-creation of Supervision Principles for Interprofessional Learners
Dr Cath Bruce - Dr Tutu Popoola - Karen Swift - Pr John Hammond

BOOK NOW >>

3. Human Factors in Primary Care - Exploring Human Factors, Systems Thinking and Reflective Discussion
Dr Leone Walker - Dr Caroline Sweeney

BOOK NOW >>

4. Getting Involved in Research and Innovation (R&I): A Practical Guide for GP Practices
Dr Edyta McCallum - Dr Mayur Vibhuti

BOOK NOW >>

5. Practical introduction to Quality Improvement Projects
Karleen Huggins

BOOK NOW >>



Workshop 1: Leading Effective Dialogues in Challenging Situations

Monika Carlin

Leading Effective Dialogues in Challenging Situations is a practical workshop designed to equip leaders with the skills needed to handle sensitive conversations with confidence, empathy, and professionalism. It focuses on managing discussions around performance concerns, wellbeing issues, and other difficult topics that can significantly affect team morale and retention. Participants learn how to use non-judgemental language to communicate feedback clearly while avoiding blame or assumptions.

The course introduces frameworks that help leaders balance accountability with empathy, ensuring expectations are set while recognising individual circumstances. A strong emphasis is placed on developing emotional intelligence, particularly through techniques for active listening, de-escalation, and emotional regulation during challenging interactions. By the end of the workshop, leaders are better prepared to navigate complex conversations in a way that builds trust, strengthens relationships, and supports a positive workplace culture.

Speaker Bio:

Monika Carlin

MSc, PG Diploma, BA(Hons), Chartered FCIPD



Monika is an experienced HR professional with over 15 years' experience across a range of sectors, including healthcare, manufacturing, logistics and education. Her career has focused on supporting organisations to build effective, people-centred pract

Skills and interests

Currently working as an HR & Workforce Education Lead within General Practice, Monika specialises in developing and embedding HR functions that support both operational effectiveness and staff experience. She works closely with the Kent and Medway Primary Care Training Hub to design and deliver training programmes for leaders, focusing on practical HR skills, capability building and compliant people management.

Monika's key interests include employee engagement, staff wellbeing and creating positive workplace cultures. She is particularly passionate about delivering training, coaching and mentoring, enabling others to build confidence and capability in managing people and navigating complex workplace situations.



Workshop 2: Compassion in Action – Co-Creation of Supervision Principles for Interprofessional Learners (1/3)

Dr Cath Bruce – Dr Adetutu Popoola – Karen Swift – Pr. John Hammond

This workshop brings together multiprofessional educators and students to collaborate, explore and define compassionate supervision within primary care learning environments. It responds to increasing pressures in healthcare environments, workforce burnout, and the challenges of supervising across professional and digital boundaries, whilst acknowledging the depth of knowledge amongst our multi-professional educators across Kent.

Purpose and Aims

The workshop aims to co-design a shared set of interprofessional principles for compassionate supervision that enhance learner safety, promote equity, and support workforce retention. Participants will work together to develop a collective understanding of what compassionate supervision is, why it matters, and how it can be implemented in diverse and evolving multi-professional care settings.

Key Learning Outcomes

By the end of the session, participants will be able to:

- Define compassionate supervision in an interprofessional context
- Explain its value for learner wellbeing, engagement, and safe practice
- Identify and apply practical strategies to support compassionate supervision
- Recognise barriers and enablers within real-world clinical environments

Workshop Structure

The workshop is structured around a “What–Why–How” model.

This model is further informed by established theories, including humanistic learning theory, psychological safety, and compassionate leadership. The session combines interactive and reflective learning with multi-professional group work and co-facilitation from students, looking in particular at:

- Defining compassionate supervision
- Exploring its importance in practice
- Identifying practical strategies
- Examining barriers and enablers

Expected Outputs

The workshop will generate:

- A shared interprofessional understanding of compassionate supervision
- A co-designed set of principles to guide practice
- Actionable insights into behaviours, systems, and conditions that enable compassionate supervision
- Contributions toward a model for interprofessional supervisor development

Overall Impact

This workshop supports the development of more compassionate, inclusive, and effective supervision practices in primary care. By centring collaboration between learners and educators, it aims to strengthen interprofessional relationships and improve both learning experiences and patient care outcomes.

This workshop also contributes to a research study exploring compassionate supervision principles across Primary Care and your insights will make a meaningful difference.



**KENT AND
MEDWAY
MEDICAL
SCHOOL**





Workshop 2: Compassion in Action – Co-Creation of Supervision Principles for Interprofessional Learners (2/3)

Dr Cath Bruce – Dr Adetutu Popoola – Karen Swift – Pr. John Hammond

Speaker Bio: Dr Cath Bruce



Cath Bruce is a GP in West Kent. She trained at University College London, completing an intercalated BSc. in History of Medicine, and then went on to complete her GP training in Milton Keynes. In addition to working as a GP Partner for many years, she has also worked as Clinical Lead for a contraception and well-being charity for young people, and now works as the Specialist Medical Advisor for NHS Supply Chain.

Through her time at KMMS, she initially started through the GP Fellowship programme, moving on to be Module Lead for general practice for year two students, and is now working as Faculty Development and Quality Improvement Lead for Primary Care placements. She has also been an active multi-professional primary care educator over many years, including as a GP Trainer.

Speaker Bio: Dr Adetutu Popoola



Tutu is the Lead for General Practice and Community Education and a Senior Fellow of the Higher Education Academy at KMMS, where she oversees the delivery of the primary care component of the BMBS programme. She is the academic representative of KMMS on the academic board of CCCU. She has a portfolio career as a GP Trainer and mentor for newly qualified healthcare professionals in the Kent and Medway Training Hub New to Practice Programme. She is passionate about advancing community healthcare, medical education and inspiring the future generation of doctors.

She has established clinics and promoted teaching within rural communities in Nigeria in collaboration with Non-Governmental Organisations. In the UK, she has advanced her interest in community teaching initially as an educator for Kings College, London and has since remained active in primary care and medical education.

Her other roles include campus and placement teaching for students across diverse undergraduate programmes and assessment of GP trainers undertaking their Postgraduate Certificate in Leadership and Education. She mentors young people aspiring to study Medicine through the East Kent MedStart Programme and has an interest in Ophthalmology as a GP with an extended role.



**KENT AND
MEDWAY
MEDICAL
SCHOOL**





Workshop 2: Compassion in Action – Co-Creation of Supervision Principles for Interprofessional Learners (3/3)

Dr Cath Bruce – Dr Adetutu Popoola – Karen Swift – Pr. John Hammond

Speaker Bio: Karen Swift



Karen has been involved in multi professional clinical teaching and supervision for several years after starting her career as a nurse. Her clinical background consists mostly of emergency medicine and acute care but since qualifying as an Advanced Practitioner in 2017, following completion of an extensive portfolio and an MSc, has led Advanced Practice education across an acute trust and the wider system including primary and community care. She has supervised several trainees from all professions. She has undertaken NHS England Fellowships with projects focussing on development of Advanced Practice supervision at an acute trust and the ICS, ongoing development for supervisors and also a year long fellowship looking at simulation and its use for Advanced Practice education and development.

Her current role allows for collaborative working with a range of stakeholders to advise and ensure governance and standards for supervision are met and has recently collaborated on a set of e-Learning training resources to support Advanced Practice supervision and continues to lead ongoing work with this project.

Speaker Bio: Pr. John Hammond



Pr. Hammond's qualifications include an Education Doctorate, PG Cert Teaching and Learning in Higher Education, MSc Musculoskeletal Physiotherapy and a BAppSc Physiotherapy. In his clinical career, he specialised in musculoskeletal physiotherapy and pain; in his academic career he specialised in pedagogy on reflective and professional practice, interprofessional working and issues of social justice such as gender, LGBTQIA+ and race.

Pr. Hammond is currently Professor of Interprofessional Practice at CCCU, exploring research opportunities that investigate interprofessional learning and collaboration particularly in the transition from pre-registration to qualified practice. This role provides strategic insight for interprofessional teaching and learning practices. He is also professional lead for Physiotherapy and provide strategic advice and input for the physiotherapy curriculum and team. His research interests also include issues of social justice; such as gender, sexual orientation, ethnicity, disability and allyship.



**KENT AND
MEDWAY
MEDICAL
SCHOOL**





Workshop 3: Human Factors in Primary Care - Exploring Human Factors, Systems Thinking and Reflective Discussion

Dr Leone Walker - Dr Caroline Sweeney

This workshop explores human factors in the context of primary care, focusing on how they influence our daily work and often in ways we might not immediately recognise. This will be an informative review accompanied by case studies to open up discussion about both the challenges and opportunities human factors present. We'll consider strategies to create a safe, supportive working environment that promotes wellbeing, teamwork and effective supervision. As educators and supervisors, understanding human factors helps us to support our trainees to thrive and not just avoid the pitfalls.



Speaker Bio:
Dr Leone Walker

Dr Leone Walker is a GP based in West Kent, with a developing interest in medical education and simulation based education.

For the past three years, she has been a session lead with the Kent, Surrey and Sussex (KSS) Primary Care Simulation Faculty delivering simulation training to multiprofessional primary care teams. She is currently undertaking a Postgraduate Certificate in Simulation in Clinical Practice at the University of Brighton.



Speaker Bio:
Dr Caroline Sweeney

Dr Caroline Sweeney is a GP in Tunbridge Wells with a special interest in simulation based education and human factors.

Dr Sweeney is a session leader with the Kent, Surrey and Sussex Primary Care Simulation Faculty and completed a fellowship in simulation-based education at the University of Brighton. She is an experienced simulation facilitator and teacher for multiprofessional undergraduate and postgraduate learners.



Workshop 4: Getting Involved in Research and Innovation (R&I): A Practical Guide for GP Practices (1/2)

Dr Edyta McCallum - Dr Mayur Vibhuti

GP practices and their staff, including GPs, nurses, healthcare assistants, practice managers, receptionists, and administrative teams, play a critical role in supporting UK Research and Innovation (R&I), which underpins improvements in patient care, service design, and population health outcomes. However, many practices experience research as opaque, burdensome, or misaligned with day-to-day operational realities. This workshop is designed to demystify R&I in primary care and support practices to engage confidently and proportionately through their Integrated Care Board (ICB) R&I Office, while also recognising R&I as an opportunity for workforce development.

It will explore how educators and learners can be involved in research, evaluation, or innovation activity where appropriate, alongside opportunities for staff upskilling in areas such as quality improvement, data collection, and applied research skills, without adding unnecessary burden to practices.

The workshop aims to build a clear understanding of what R&I means in practical primary care terms, clarify the role and support offered by the ICB R&I Office, and enable participants to identify realistic, low-burden opportunities for participation that align with practice capacity and priorities.

By the end of the session, participants will be clear about what engagement involves (and what it does not involve), will know who to contact for advice and support, and will feel confident in taking appropriate next steps for their practice or Primary Care Network (PCN).

Content will include an overview of the region's performance and participation in research within the national context, highlighting areas of strength as well as opportunities for growth and shared learning. Governance requirements will be addressed at a high level to reduce anxiety, with a focus on ethics, consent, data sharing, patient safety, and clarity about the ongoing support provided by the ICB R&I function.

The workshop will also clearly explain the differences between research, service evaluation, quality improvement, and innovation, and what each involves in terms of governance requirements, approval routes, and clinical responsibility.

A core component of the session will focus on the ICB R&I Office as a single front door for R&I activity. This will include an overview of how the R&I Office screens and quality-assures opportunities before they reach practices, supports governance and information governance processes, facilitates contracting and funding, and protects practices from unfunded, poorly designed, or disproportionately burdensome activity.

The session will introduce the GP Research Accreditation Scheme, which provides a proportionate and supportive framework for practices to demonstrate readiness to take part in research at a level that suits them. Linked to this, the workshop will highlight the role of a Practice or PCN Research Champion, a named individual who acts as a local point of contact for research opportunities and works with the ICB R&I Office. Practices and individuals will have the opportunity during the session to sign up to the accreditation scheme and/or register a Research Champion, with clear, practical guidance on what happens next and the support available following registration.

The workshop will conclude with practical models of engagement, including site-level participation and PCN-level approaches, alongside opportunities for discussion, reflection, and feedback.





Workshop 4: Getting Involved in Research and Innovation (R&I): A Practical Guide for GP Practices (2/2)

Edyta McCallum - Dr Mayur Vibhuti

Speaker Bio: Edyta McCallum



Dr Edyta McCallum completed her PhD in Molecular Biology at the University of London and her MSc in Quality Improvement and Patient Safety at the University of Nottingham. She is the Senior Research Co-ordinator at the Kent and Medway Integrated Care Board (KM ICB). Edyta has over 15 years of experience in health and care research, specialising in research governance and delivery. She has played a pivotal role in the creation of the first Joint Research Offices in London and has been instrumental in the development of the Clinical Local Research Network (CLRN) and the Kent and Medway Research & Innovation Collaborative (KM RIC)—a group bringing together research professionals from academia, primary care, local authorities, acute hospitals, and other research-active institutions.

Edyta is deeply committed to embedding a research and innovation culture within primary care settings, bridging gaps between research-active institutions, and solidifying the role of the Integrated Care Board (ICB) in facilitating research delivery. She established a highly successful Research & Innovation Department at Medway NHS Foundation Trust (MFT) and is currently working to extend this success into primary care settings across Kent and Medway. Her work focuses on integrating research culture within primary care practices, general practices, and community health services to address challenges and improve outcomes for patients and healthcare professionals alike.

Edyta is a passionate advocate for collaborative research and believes that research and innovation services should align more closely with the principles of the Integrated Care Partnership (ICP). She envisions a unified approach where primary care professionals, through collaboration and evidence-based practice, can tackle the pressing challenges facing communities and the healthcare workforce.

Speaker Bio: Dr Mayur Vibhuti



Dr. Mayur Vibhuti is a practising GP and the Chief Clinical Information Officer for NHS Kent & Medway ICB, where he leads large-scale digital transformation across a population of 2 million. He is known for turning ambitious ideas into practical solutions that improve patient care, support clinicians, and strengthen systems.

An outcome-driven leader, Dr. Vibhuti has spearheaded AI adoption through a cross-sector Ambient Voice Technology pilot spanning acute, primary, community, and social care settings. This initiative demonstrated how real-world deployment of AI can enhance clinical quality and workforce efficiency while navigating complex governance and safety standards.

He has established CCIO peer networks across all providers to support safer digital practice and greater collaboration, and he has led multi-professional digital leadership programmes that build lasting capability across health and care.

With additional experience as a Non-Executive Director for Primary Care International, he brings a global perspective to local NHS challenges. Dr. Vibhuti prides himself on being values-based and outcomes-focused in his work, driving responsible, inclusive, and clinically-led digital transformation.



**KENT AND
MEDWAY
MEDICAL
SCHOOL**





Workshop 5: Practical Introduction to Quality Improvement Projects

Karleen Huggins

This interactive workshop is designed to provide participants with a practical introduction to Quality Improvement within a healthcare context. Delivered from a systems perspective, the session will focus on how frontline teams can make meaningful, measurable improvements to patient care through structured approaches. The overall emphasis is on equipping delegates with simple, transferable tools that can be applied immediately within their own services.

Learning Objectives

By the end of the session, participants will be able to:

- **Define Quality Improvement (QI)** and articulate its importance in improving patient outcomes and experience
- **Use a Fishbone diagram** to identify and categorise potential causes of a problem
- **Describe the purpose of A3 thinking** as a structured approach to problem-solving and improvement planning
- **Explain the PDSA cycle** and its role in testing and implementing change
- **Identify practical improvement ideas** (countermeasures) relevant to their area of work

Project Showcases

Following the core workshop, we will include a 30-minute showcase segment, where a small number of pre-selected staff will present their A3 or improvement work. The intention of this is to:

- Celebrate and recognise ongoing improvement activity
- Encourage peer learning and shared reflection
- Build confidence and engagement across the wider group

Speaker Bio: Karleen Huggins

Karleen began her journey in Quality Improvement within the NHS in 2019, working in a paediatric acute setting at Great Ormond Street Hospital. She later moved to a Community Health Trust where she led and supported projects focused on personalised care, early identification and escalation of deteriorating patients and the co-production of a Haemoglobinopathy Focus Group.

In 2024, Karleen joined the London Ambulance Service Quality Improvement Team, bringing extensive experience and a strong belief in locally driven change. She is passionate about QI coaching and facilitating workshops and training that enable staff to confidently apply QI in practice. Karleen holds a range of QI qualifications and is an active member of the Q Community. Alongside her role at London Ambulance Service, Karleen is also a QI Fellow at NHS Elect, where she delivers Quality Improvement training and development programmes to healthcare professionals across the country.

Her aim is to demystify Quality Improvement for front line staff and support meaningful, sustainable improvements in patient care.



Exhibitors



Canterbury Christ Church University (CCCU)



Kent County Council



LMC Invicta



SE Faculty of Advancing Practice



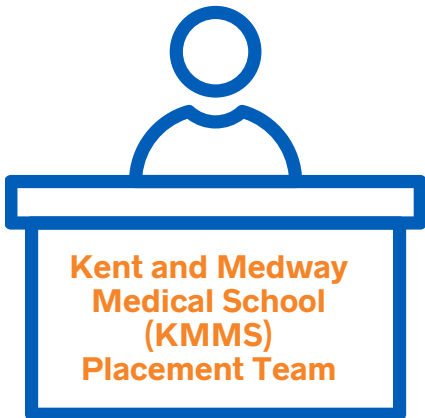
University of Greenwich



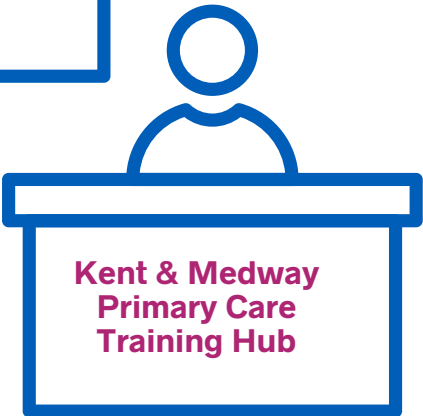
Hickby Clinical Training



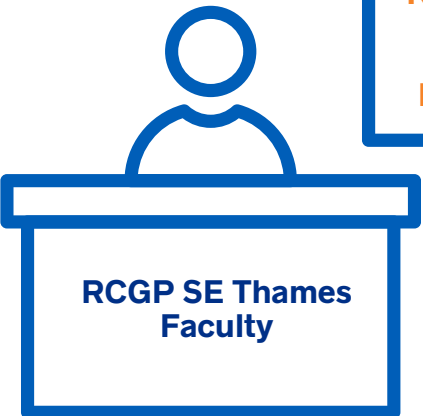
NHS Kent & Medway ICB Primary Care Team



Kent and Medway Medical School (KMMS) Placement Team



Kent & Medway Primary Care Training Hub



RCGP SE Thames Faculty





Primary Care News



Subscribe to our monthly newsletter for updates on events, webinars and courses:



Follow us on:



Visit our website:

www.kmpctraininghub.nhs.uk



KENT AND MEDWAY MEDICAL SCHOOL



Visit our website:

<https://kmms.ac.uk/>



<https://twitter.com/KMMSmedschool>



<https://www.facebook.com/KMMSMedSchool>



https://www.youtube.com/channel/UCA_7kkiYJs8XS_fU5jTyczw



<https://www.instagram.com/kmmsmedschool/>